

Your employee tested positive for Covid-19



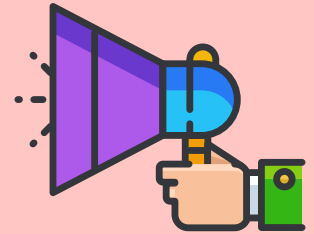
What To Do

1/11/21

1

Send Them Home

- The employee may not return to work
- Employee must isolate at home for 10 days.
- You DO NOT need a negative test to return to work



2

Contact Trace

- Quarantine any employee who was within 6 ft for 15 minutes or more of the Covid19 positive employee
- Figure out where in the facility the positive employee worked and who are they around.



3

Clean

- Deep clean your facility (Wash and Sanitize)
- Hire a Professional Cleaning Company. If not, ensure your facility has a comprehensive cleaning plan for self cleaning
- Verify all locations the Covid19 positive employee has come in contact with, are cleaned and sanitized (work station, lunch room, restrooms, etc.)



4

Continue to Follow State Specific Guidelines

- Ensure employees are wearing masks
- Social distance 6ft from each other
- Frequently perform enhanced cleaning of common surfaces
- Offer hand sanitizer
- Encourage sick employees to stay home
- Update sick policies and remote work policies
- Reinforce key hygiene messages
- Comply with CDC and ODH applicable guidance

